

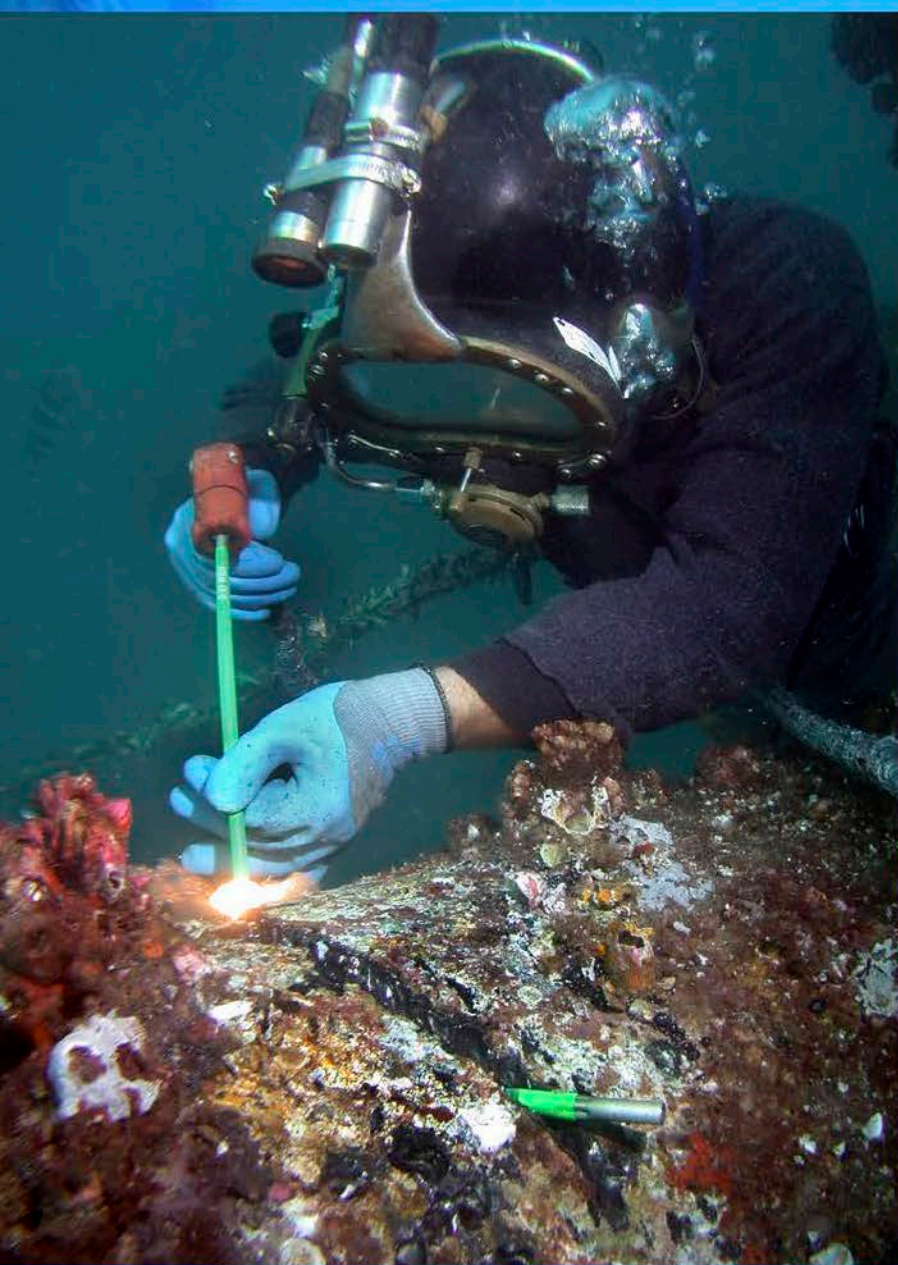


Oxylance

Sureweld

**Aqua EXO
Aqualance**





AQUA EXO UNDERWATER CUTTING RODS

- Tube in a tube design gives operator the performance of a tubular steel rod that burns exothermic.
- Oxygen flows through the center of the rod and comes out in a tight stream giving the diver a more defined kerf and reduces oxygen consumption by up to 25%.
- High visibility heat shrink insulation insures that the rods are easy to see in low visibility and insulation will not peel off like rods wrapped with electrical tape.
- Proprietary plating process on outer tube will not cor-rose and eliminates requirement for cleaning the ends of rods so they will go in the collet.
- Conveniently packaged: Ten rods are sealed in a plastic bag.
- Bags are packed in a plastic box that will not fall apart when wet.
- AQUALANCE Tubular Steel Rods have a proprietary plating that prevents rust and corrosion.

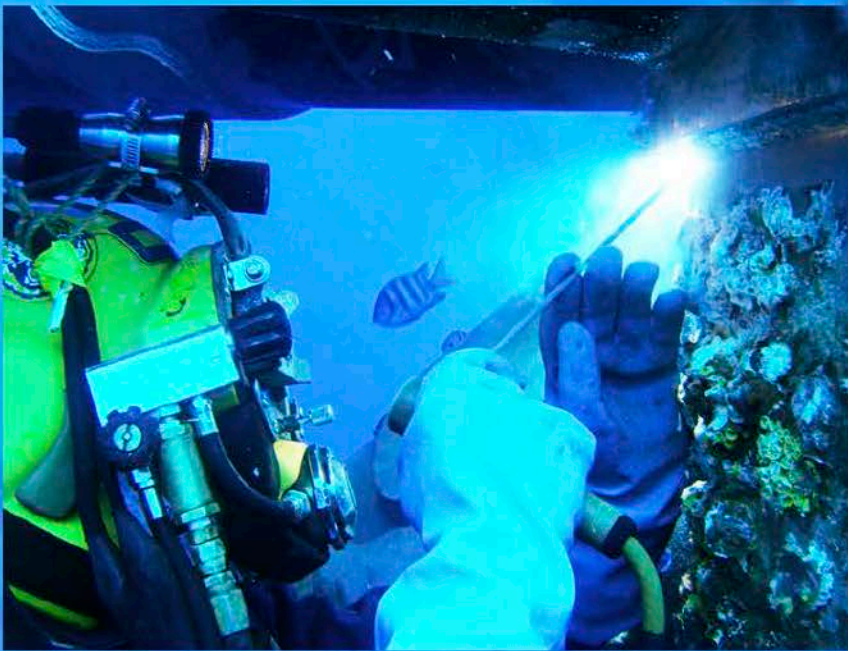


AQUALANCE
5/16" Tubular Steel



AQUA-EXO
3/8" Exothermic

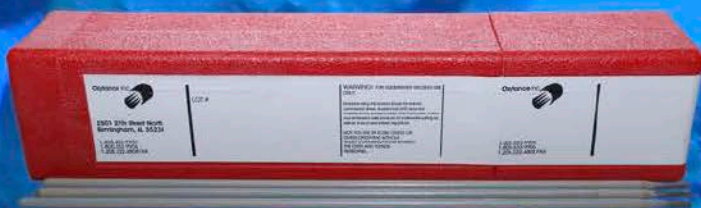
AQUA EXO & AQUALANCE CUTTING RODS
BUILDING OUR REPUTATION ONE DIVER AT A TIME



SURWELD WET WELDING ELECTRODES

- **SURWELD # 1** - 1/8" Mild Steel for wet welding on carbon steel up to .40 carbon equivalent. Has been tested to D3.6 Class "B" welds to depths of 365 fsw.
- **SURWELD # 2** - 5/32" Mild Steel for wet welding on carbon steel up to .40 carbon equivalent.
- **SURWELD # 33** - 3/32" Stainless Steel for wet welding on stainless or carbon steel. This electrode is excellent for welding dissimilar material.
- **SURWELD NI** High Nickel wet welding electrode for wet welding on high carbon steel such as HY-80. Developed with the US Navy for making wet weld repairs on high strength steel ship hulls. The SUR-WELD NI can also be used for wet welding SS and SS to high carbon steel.

SURWELD electrodes meet or exceed all of the requirements of the AWS D3.6 Underwater Welding Code.



REG-5-500

- Single Stage high volume regulator.
- 500 psi outlet pressure.
- Flows 10000 cubic feet per hour in air.
- CGA 540 inlet and 1/2" npt outlet.

This regulator was designed and tested to flow high volume oxygen against the back pressure associated with depth. At 600 fsw it will flow over 5000 cubic feet of oxygen per hour.



UNDERWATER WELDING STINGER

- UW-250 Light Weight wet welding stinger.
- UW-400 Heavy Duty wet welding stinger.



Simple design with long lasting brass and stainless parts.



OXYLANCE

2501 27th Street North
Birmingham, AL 35234

Tel: [205] 322-9906
Toll Free: [800] 333-9906
(U.S. Only Fax [205] 322-4808
www.oxylance.com